

Global Acceleration Program Starts ~Creation of International Startups~

July 7, 2017

Keihanna Research Complex
(Public Foundation of Kansai Research Institute)

Keihanna Research Complex (RC) has started a global acceleration program in partnership with the Entrepreneurs Roundtable Accelerator (ERA), one of the largest accelerators in New York City. Keihanna RC pursues world-class innovation in the Keihanna Science City, with the Public Foundation of Kansai Research Institute at its core. In this program, startup companies aiming to expand business overseas can make a special arrangement with ERA and pitch to investors in the US.

Keihanna RC will establish a Keihanna innovation ecosystem, where venture businesses are trained and supported by our acceleration program and the diverse human resources organically connected there. These businesses, along with research institutes and large enterprises that generate leading-edge research outcomes, are expected to produce innovations one after another.

Outline of Global Acceleration Program

A pitch event named “Keihanna Venture Championship (KVC)” is set to be held monthly, from July. The champion and runner-up in each category are awarded with support for enhancing business. The champion will also get a ticket to the KVC grand finale scheduled for January 2018. The overall champion and runner-up in the grand finale will take ERA’s intensive program in New York City and later pitch to US investors.

1) Keihanna Venture Championship (KVC)

- KVC will be held every month, from July 21 to December. Participants include individuals, teams, and companies who work to create new features in the fields of brain-tech, life science, IoT, ICT, robotics, and blockchain.
- The champions of each KVC will compete in the grand finale held in January 2018.

2) Support for business enhancement

- The champion and runner-up in each KVC are provided with support for business enhancement, including a menu of useful resources* provided at Keihanna.

*Opportunities to obtain knowledge on the latest research, such as brain technology and robotics, mentoring programs from executives of large enterprises, and so on.

3) ERA special program and pitch in the US

- The overall champion and runner-up in the KVC grand finale will take a 1-week intensive program from ERA in New York and pitch to US investors for fund raising.



Entrepreneurs Roundtable Accelerator (ERA) Demo Day

■ Keihanna Research Complex (RC) Project

The Keihanna RC project comprises 32 organizations in the Keihanna Science City, which marks its 30th anniversary this year. This project was selected for the Research Complex Promotion Program promoted by the Japan Science and Technology Agency (JST). The project members are working to construct an “Innovation Ecosystem” that independently nurtures innovation chains through development of core technologies such as i-Brain (brain and human science technologies) and ICT (information communications technologies). Other efforts include training of human resources to develop the mind of a producer and cooperative creation among universities, research institutions, large-, medium-, small-scale and backbone industries, venture enterprises, and even local residents. Moreover, we are working to create a Keihanna that involves people, that creates high-income enterprises, and that soars into the world (see appendix for details).

■ Entrepreneurs Roundtable Accelerator (ERA)

Entrepreneurs Roundtable Accelerator (ERA) is the largest accelerator program in New York, and it has a deep and strong mentor network with more than 300 expert investors, technologists, product specialists, marketers, customer acquisition strategists, sales executives and more, spread across every major industry. To date, ERA alumni companies have raised funds of over 200 million dollars in investor capital. ERA provides early-stage startups with intensive programs to help them develop fast.

■ 1st KVC

- Date and Time: Friday, July 21, 2017 from 16:00 (4:00 PM)
- Venue: Advanced Telecommunications Research Institute International (ATR)
- Sponsor: Keihanna RC, Co-sponsor: KYOTO Industrial Support Organization 21

Please contact us in advance for interview requests.

【Contact】 Keihanna Research Complex (<http://keihanna-rc.jp/>)

PR personnel: Nakajima (Mr.), Tatsumi (Ms.) Email: rc-presspr@keihanna-rc.jp

TEL: 0774-95-2540 FAX: 0774-95-1178

Address: ATR Business Development Office, 2-2-2 Hikaridai Seika-cho, Sorakugun, Kyoto, JAPAN

Keihanna Research Complex

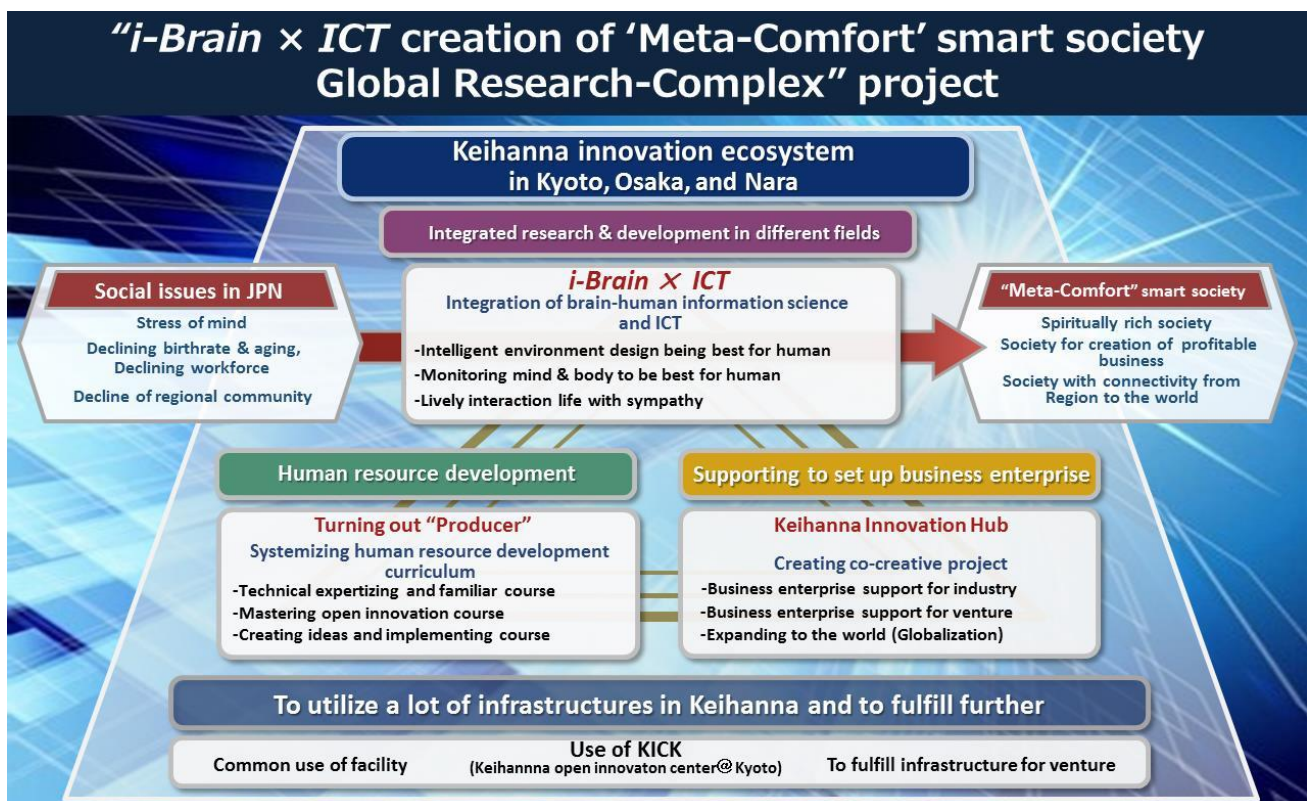
(Core Institution: Public Foundation of Kansai Research Institute)

“*i-Brain* × *ICT* creation of ‘Meta-Comfort’ smart society Global Research-Complex” project

■ Overview

At present Japan faces a variety of social problems. In particular, the feeling that society as a whole is closing with the dwindling population is a significant issue. Vitality is decreasing due to fewer births, an aging population, and fewer people in the work force. Economic activity is stagnating due to regional decline and shrinking markets. In such an age, people seek to be rich in spirit over being rich in material goods. The “Meta-Comfort” Smart Society will realize this richness in spirit, and our goal is the creation of a society that generates feeling, vitality and empathy in people’s hearts.

The Keihanna Research Complex takes *i-Brain* (brain and human science technologies) and *ICT* (information communications technologies) as the core of its technological development. The term *i-Brain* refers to a group of technologies that quantitatively and objectively understands the heart based on an analysis of human psychology, activity, the brain and biological information data. Fusing this with advanced *ICT* including AI, big data analysis and IoT, we aim to develop technologies that create spiritual richness. We will work to resolve social problems through the development of these technologies, and at the same time will contribute to vitalization of economic activities by creating new businesses.



Concrete research and development efforts include (1) intellectual productivity improvements in the office and intellectual environment design that brings stress relief to hospital and nursing work sites, (2) clothing, food and shelter innovations through mentally and physically comfortable monitoring at every life stage from baby to aged, and (3) the development of next-generation robots and next-generation telecommunication systems that use non-verbal communication technologies to get close to people's hearts.

In addition to the development of these technologies, we are also working to train human resources possessing the mind of a producer, and to construct an "Innovation Ecosystem" that independently brings about innovation chains through cooperative creation on the part of universities, research institutions, large-, medium-, small-scale and backbone industries, venture enterprises and local residents. We are working to create a Keihanna that involves people, that creates high-income enterprises, and that soars into the world.

■ Participating Institutions (as of Aug. 2016)

Kansai Economic Federation / Advanced Telecommunications Research Institute International(ATR) / aromajoin corporation / Bank of Kyoto, Ltd. / Daikin Industries, Ltd. / Daiwa House Industry Co., Ltd. / JATO Co., Ltd. / Kimura Kohki Co., Ltd. / Kyocera Corporation / Mitsufuji Corporation / NTT Communication Science Laboratories / OMRON Corporation / Panasonic Corporation, AVC Networks Company / Proassist, Ltd. / PROKIDAI / SHIMADZU CORPORATION, Technology Research Laboratory / Skill Information"S" Co. Ltd. / Suntory Holdings Limited / Doshisha University / Kyoto University / Nara Institute of Science and Technology(NAIST) / National Institute of Technology, Nara College / Nara Medical University / Nara Women's University / Osaka University / The University of Tokyo / Center for Information and Neural Networks(CiNet) / National Institute of Information and Communication Technology, Universal Communication Research Institute(NICT) / Research Institute of Innovative Technology for the Earth(RITE) / Kyoto Prefecture / Osaka Prefecture / Nara Prefecture / Kansai Research Institute

■ Overview of the Research-Complex Promotion Program

This program is promoted by the Ministry of Education, Culture, Sports, Science and Technology and the Japan Science and Technology Agency (JST). The overview of the program is as follows.

"A research-complex is a place in which the varied activities of research institutions, companies, universities and other entities concentrated in a region are merged, attracting the attention of the world. It is a combined innovation promotion base for advanced research and development through a merging of differing areas, the commercialization of results, and the unified and comprehensive development of human resource training. This program paints a vision of how local structure and social values should be realized in five to 10 years. We aim to assist the efforts made by the Research-Complex to realize this vision and contribute to regional creation." (From the JST web site)



This Keihanna Research Complex was selected for this program in September 2016.

Public Foundation of Kansai Research Institute <http://kri.or.jp/english/>
 Meta-Comfort Smart Society Promotion Office / Keihanna Research Complex Project Bureau
 1-7 Hikaridai, Seika-cho, Soraku District, Kyoto Prefecture 619-0237, Keihanna Plaza Lab Wing 3F
 TEL: +81-774-95-5047 FAX: +81-774-95-5234 E-mail: info@keihanna-rc.jp
 Keihanna Research Complex Web Site: <http://keihanna-rc.jp/en/>